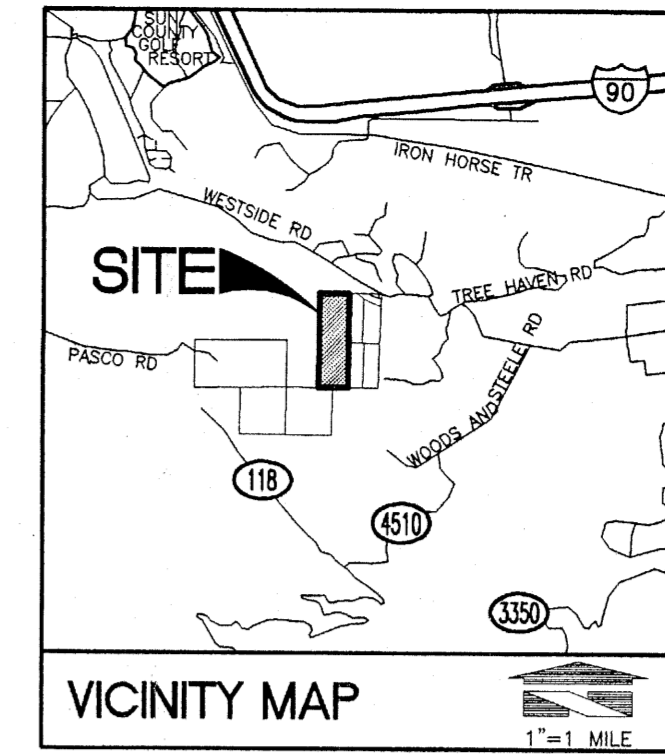


COVER SHEET
OF
STARLITE HEIGHTS
A PORTION OF SECTION 01, TOWNSHIP 19 N., RANGE 14 E., W.M.
KITITAS COUNTY, WASHINGTON



RECEIVED
JUL 0 3 2007
KITITAS COUNTY
ODS

NOTES

1. TAX #: 19148
2. TOTAL SITE AREA: 2,191,939 S.F. (50.32 AC)
3. EXISTING USE: VACANT
4. PROPOSED USE: 32-LOT SINGLE FAMILY RESIDENTIAL SUBDIVISION
5. EXISTING ZONING: R-3 (1DU/3ACRE)
6. EXISTING COMPREHENSIVE PLAN DESIGNATION: RURAL
7. REQUIRED MIN. LOT AREA: 21,780 S.F.
8. PROPOSED MIN. LOT AREA: 22,751 S.F.
9. PROJECT DENSITY: 0.64 DU/ACRE
10. REQUIRED MIN. SETBACKS:
FRONT/SIDE STREET: 25 FEET
INTERIOR: 15 FEET
REAR: 15 FEET
11. SOURCE OF BOUNDARY: BLUHM ASSOCIATES LAND SURVEYORS, INC
12. SOURCE OF TOPOGRAPHY: DeGROSS AERIAL MAPPING

UTILITIES/SERVICES:

WATER: FUTURE GROUP A PUBLIC WATER SYSTEM
PHONE: QWEST COMMUNICATIONS
P.O. BOX 91073
SEATTLE, WA 98111
(800) 244-1111

SEWER: PRIVATE INDIVIDUAL ON-SITE SEPTIC SYSTEM OR COMMUNITY DRAIN FIELD.
FIRE: KITITAS COUNTY FIRE DISTRICT #7
921 UPPER PEOH ROAD
SOUTH CLE ELUM, WA 98943

POWER: PUGET SOUND ENERGY
105 - 156TH AVENUE N.E.
BELLEVUE, WA 98005
1(800) 321-4321

SCHOOL: CLE ELUM-ROSYLN SCHOOL DISTRICT #404
2690 STATE ROUTE 903
CLE ELUM, WA 98922
(509) 649-2393

OWNER/DEVELOPER

STARLITE CONSTRUCTION
3909 164TH ST SW
LYNNWOOD, WA 98037

ENGINEER/PLANNER

BARHAUSEN CONSULTING ENGINEERS, INC.
18215 72ND AVE. SOUTH
KENT, WA 98032
(425) 251-6222
FAX (425) 251-8782
CONTACT: BARRY TALKINGTON/IVANA HALVORSEN

BOUNDARY SURVEY

BLUHM ASSOCIATES LAND SURVEYORS, INC.
1068 S. MARKET BLVD.
CHEHALIS, WA 98532
(360) 748-1551
CONTACT: JOHN BENTLEY

TOPOGRAPHIC SURVEY

DeGROSS AERIAL MAPPING
18623 BEARDSLEE AVENUE
BOTHELL, WA 98011
(425) 828-4448
CONTACT: GERRY DeGROSS

LEGAL DESCRIPTION

"PER AMERITITLE ORDER NO. 0096165"

LOT 12-B, SP-2003-11 FOWLER CREEK LARGE LOT SUBDIVISION, IN THE COUNTY OF KITITAS, STATE OF WASHINGTON, AS PER PLAT THEREOF RECORDED IN BOOK 8 OF PLATS, PAGES 231 AND 232, RECORDS OF SAID COUNTY.

LOT AREA TABLE

LOT #	AREA (S.F.)	AREA (S.F.)
1	32,004	0.73
2	38,447	0.88
3	26,606	0.61
4	26,384	0.61
5	26,558	0.61
6	24,051	0.55
7	29,587	0.68
8	29,584	0.68
9	30,686	0.70
10	24,003	0.55
11	26,763	0.61
12	32,257	0.74
13	31,315	0.72
14	33,185	0.76
15	31,049	0.71
16	39,630	0.91
17	33,239	0.76
18	25,891	0.59
19	40,763	0.94
20	38,826	0.89
21	39,407	0.90
22	33,154	0.76
23	33,597	0.77
24	30,608	0.70
25	46,090	1.06
26	36,067	0.83
27	29,213	0.67
28	23,294	0.53
29	42,650	0.98
30	22,751	0.52
31	23,253	0.53
32	24,400	0.56
TOTAL LOT AREA	1,005,312 SF	23.08 AC.
AVERAGE LOT AREA	31,416 SF	(0.72 AC.)

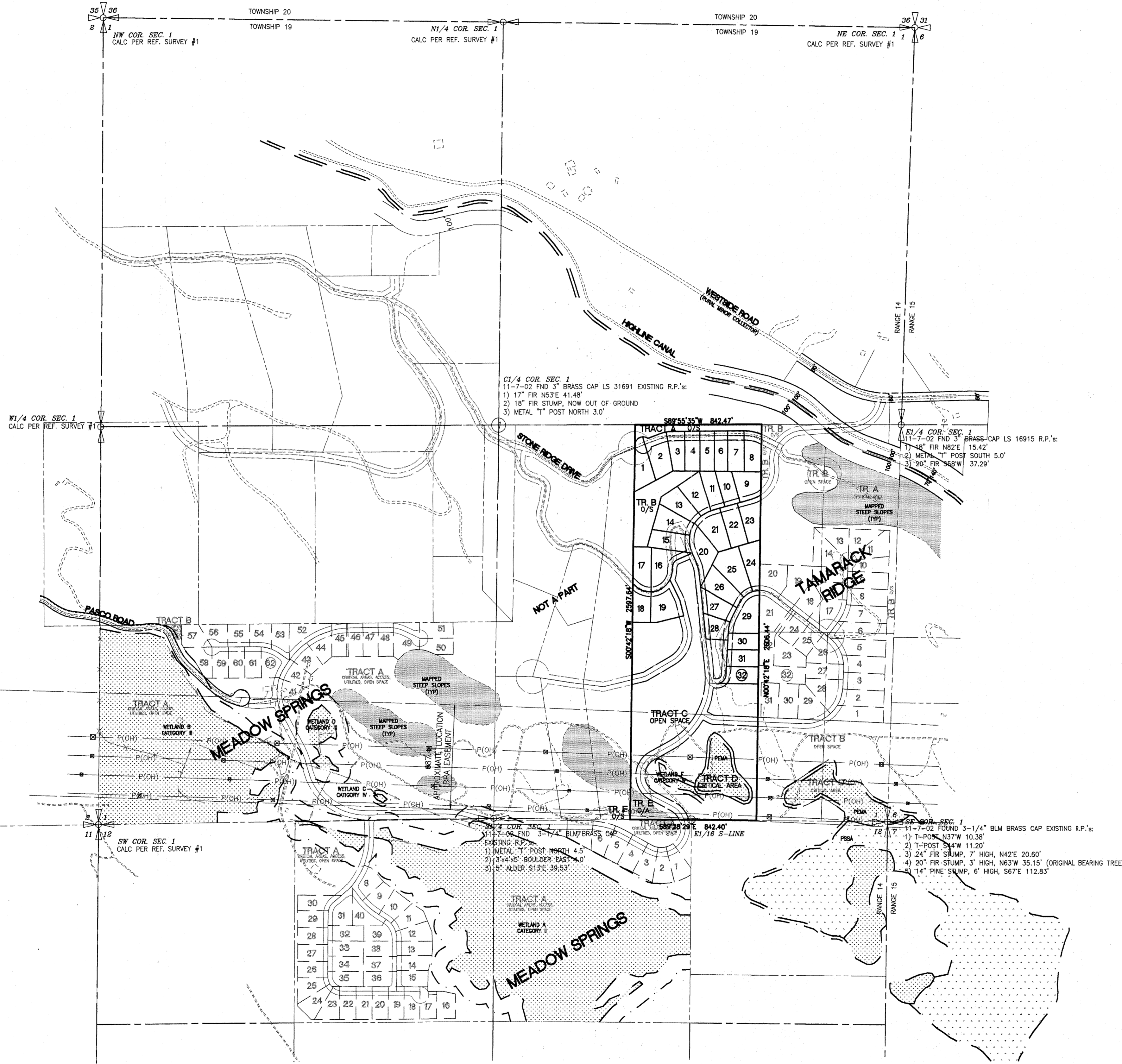
TRACT TABLE

TRACT	USE	AREA (S.F.)	AREA (AC.)
A	OPEN SPACE	41,966	0.96
B	OPEN SPACE	79,449	1.82
C	OPEN SPACE	936,483	21.50
D	CRITICAL AREA	97,943	2.25
E	CRITICAL AREA	25,374	0.58
F	OPEN SPACE	5,414	0.12
TOTAL AREA		1,186,629 SF	27.24 AC.

OPEN SPACE TABLE

GROSS SITE AREA	50.32 AC. (2,191,939 S.F.)
PROJECT AREA	47.49 AC. (12,068,622 S.F.) (GROSS SITE AREA LESS ROADS, CRITICAL AREAS & BPA EASEMENT)
REQUIRED OPEN SPACE (40% OF PROJECT AREA)	19.00 AC.
PROPOSED OPEN SPACE*	22.45 AC.
PROPOSED OPEN SPACE % OF PROJECT AREA	47 PERCENT

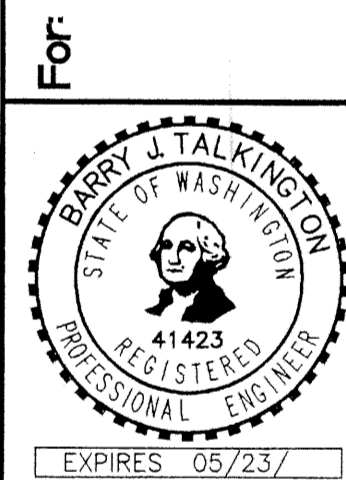
* DOES NOT INCLUDE PROPOSED ROAD EASEMENTS, CRITICAL AREAS, OR BPA EASEMENT



17/07/07
 04/09/07
 No. Date By Cld. / Appr.
 Revised per county comment letter dated 5/4/07
 PEA SUBMITTAL

COVER SHEET
OF
STARLITE HEIGHTS

STARLITE CONSTRUCTION
3909 164TH ST SW
LYNNWOOD, WA 98037



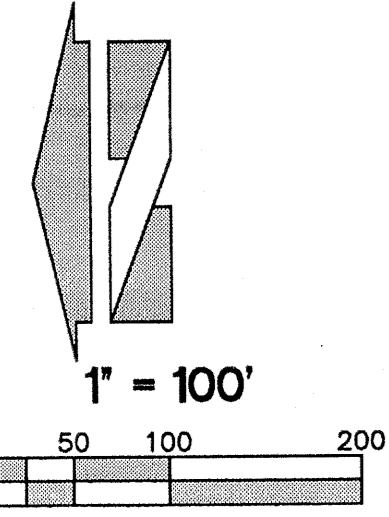
Scale:
 Horizontal 1"=400'
 Vertical N/A

Designed: JH
 Draw: AL
 Checked: JH
 Approved: JH
 Date: 4/09/07

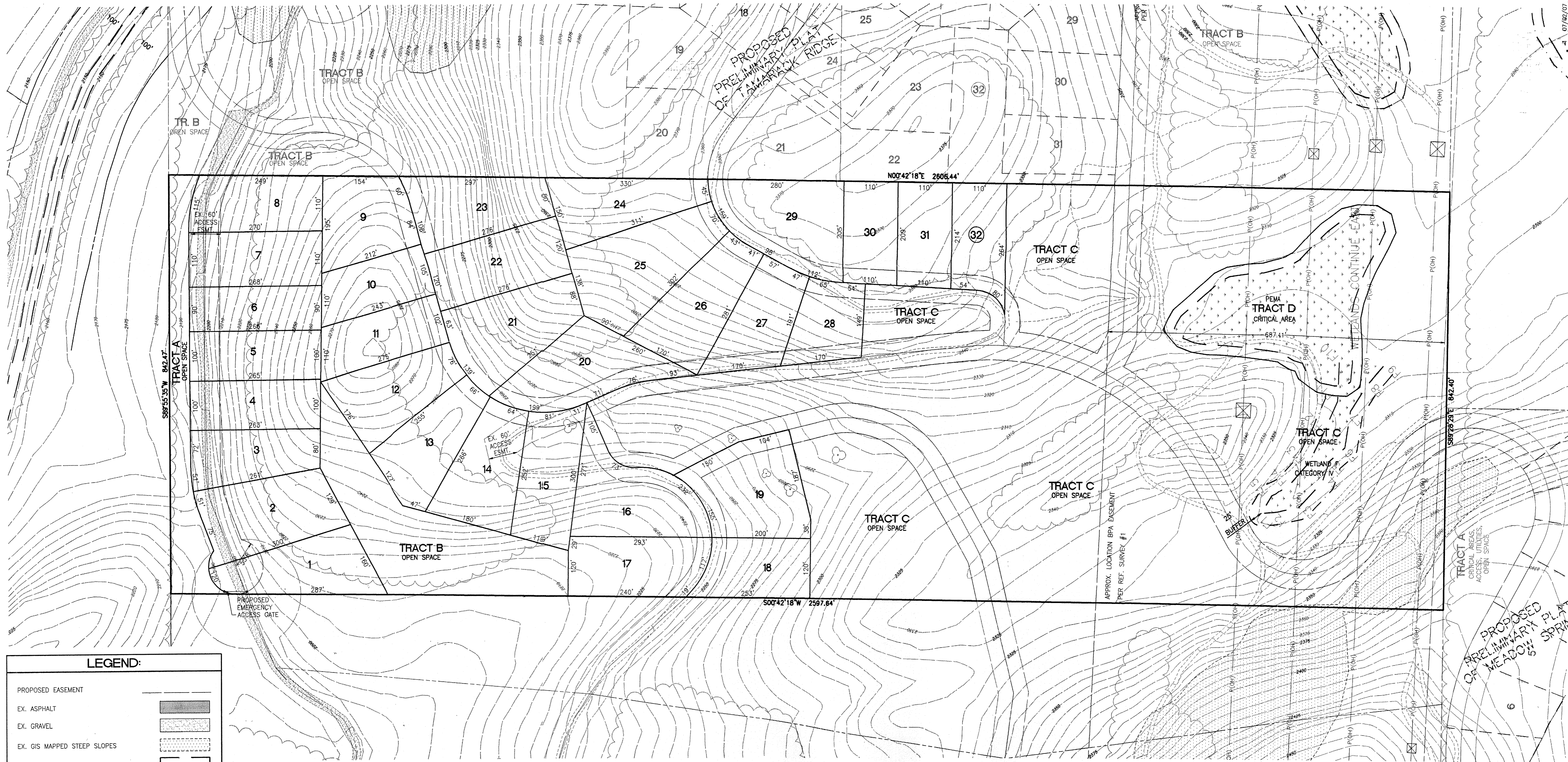
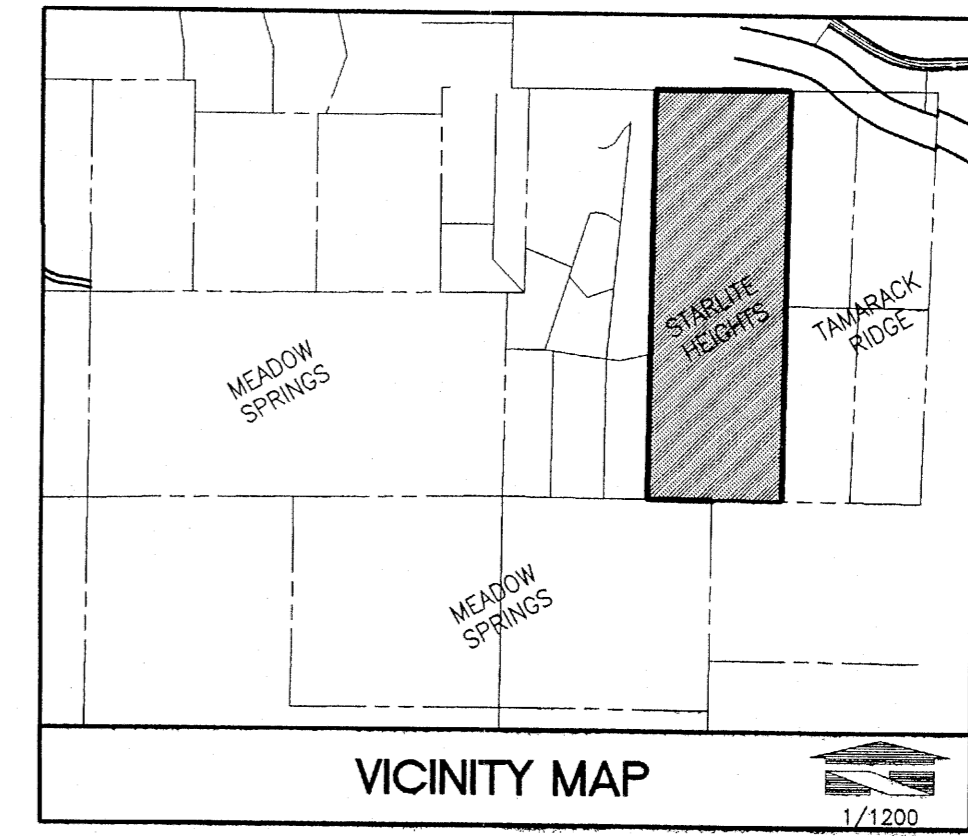
18215 72ND AVENUE SOUTH
 KENT, WA 98032
 (425) 251-6222
 (425) 251-8782 FAX
 CIVIL ENGINEERING, LAND PLANNING,
 SURVEYING, ENVIRONMENTAL SERVICES



Job Number
12854
 Sheet
1 of 2



SITE PLAN
OF
STARLITE HEIGHTS
A PORTION OF SECTION 01, TOWNSHIP 19 N., RANGE 14 E., W.M.
KITTITAS COUNTY, WASHINGTON



LEGEND:	
PROPOSED EASEMENT	
EX. ASPHALT	
EX. GRAVEL	
EX. GIS MAPPED STEEP SLOPES	
EX. WETLANDS	
EX. EASEMENT	
EX. CONTOURS	
EX. BPA TOWER	

No.	Date	By	Clcd.	Appr.	Revision
1	07/02/07	AJ	IH	IH	REVISED PER COUNTY COMMENT LETTER DATED 5/04/07
2	07/09/07	AJ	IH	IH	PLAT SUBMITTAL

Title:
STARLITE CONSTRUCTION
3909 164TH ST SW
LYNNWOOD, WA 98037



Scale:	Horizontal	Vertical
Designed	IH	IH
Drawn	AJ	IH
Checked	IH	IH
Approved	IH	IH
Date	4/09/07	N/A

18215 72ND AVENUE SOUTH
KENT, WA 98032
(425)251-6222 FAX
(425)251-8782
CIVIL ENGINEERING, LAND PLANNING,
SURVEYING, ENVIRONMENTAL SERVICES



Job Number
12854
Sheet
2 of **2**

E:\p\12009a\12854\p\12854\p\12854\12854-pre-sub.dwg Date:\Time:7/3/2007 8:44 AM Scale:1" = 1' A:\ONES Xref: 12854-pl.dwg, 12854-ps-1.dwg, 12854-ps-2.dwg, 12854-ps-3.dwg, 12854-ps-4.dwg, 12854-ps-5.dwg, 12854-ps-6.dwg, 12854-ps-7.dwg, 12854-ps-8.dwg, 12854-ps-9.dwg, 12854-ps-10.dwg, 12854-ps-11.dwg, 12854-ps-12.dwg, 12854-ps-13.dwg, 12854-ps-14.dwg, 12854-ps-15.dwg, 12854-ps-16.dwg, 12854-ps-17.dwg, 12854-ps-18.dwg, 12854-ps-19.dwg, 12854-ps-20.dwg, 12854-ps-21.dwg, 12854-ps-22.dwg, 12854-ps-23.dwg, 12854-ps-24.dwg, 12854-ps-25.dwg, 12854-ps-26.dwg, 12854-ps-27.dwg, 12854-ps-28.dwg, 12854-ps-29.dwg, 12854-ps-30.dwg, 12854-ps-31.dwg, 12854-ps-32.dwg, 12854-ps-33.dwg, 12854-ps-34.dwg, 12854-ps-35.dwg, 12854-ps-36.dwg, 12854-ps-37.dwg, 12854-ps-38.dwg, 12854-ps-39.dwg, 12854-ps-40.dwg, 12854-ps-41.dwg, 12854-ps-42.dwg, 12854-ps-43.dwg, 12854-ps-44.dwg, 12854-ps-45.dwg, 12854-ps-46.dwg, 12854-ps-47.dwg, 12854-ps-48.dwg, 12854-ps-49.dwg, 12854-ps-50.dwg, 12854-ps-51.dwg, 12854-ps-52.dwg, 12854-ps-53.dwg, 12854-ps-54.dwg, 12854-ps-55.dwg, 12854-ps-56.dwg, 12854-ps-57.dwg, 12854-ps-58.dwg, 12854-ps-59.dwg, 12854-ps-60.dwg, 12854-ps-61.dwg, 12854-ps-62.dwg, 12854-ps-63.dwg, 12854-ps-64.dwg, 12854-ps-65.dwg, 12854-ps-66.dwg, 12854-ps-67.dwg, 12854-ps-68.dwg, 12854-ps-69.dwg, 12854-ps-70.dwg, 12854-ps-71.dwg, 12854-ps-72.dwg, 12854-ps-73.dwg, 12854-ps-74.dwg, 12854-ps-75.dwg, 12854-ps-76.dwg, 12854-ps-77.dwg, 12854-ps-78.dwg, 12854-ps-79.dwg, 12854-ps-80.dwg, 12854-ps-81.dwg, 12854-ps-82.dwg, 12854-ps-83.dwg, 12854-ps-84.dwg, 12854-ps-85.dwg, 12854-ps-86.dwg, 12854-ps-87.dwg, 12854-ps-88.dwg, 12854-ps-89.dwg, 12854-ps-90.dwg, 12854-ps-91.dwg, 12854-ps-92.dwg, 12854-ps-93.dwg, 12854-ps-94.dwg, 12854-ps-95.dwg, 12854-ps-96.dwg, 12854-ps-97.dwg, 12854-ps-98.dwg, 12854-ps-99.dwg, 12854-ps-100.dwg